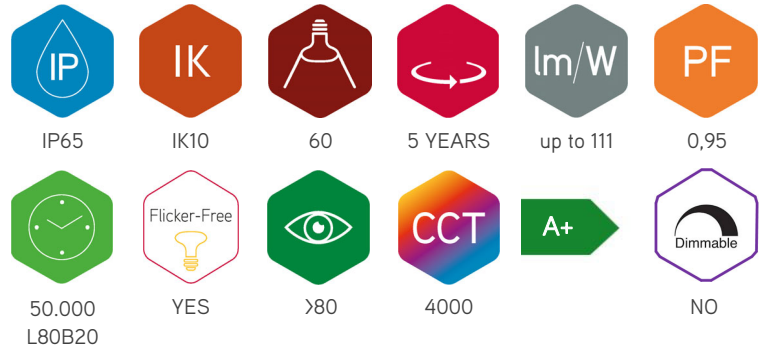




Description:

Brightmaster 2 300W 4000K 60° grey



Industrial floodlight Brightmaster 2 with 60° lens. Gray aluminum IP65 housing for even better cooling. Interpon coating for corrosive environments. Directional LED modules with Lumileds 3030/5050 and a Meanwell HLG driver. ENEC certification. Equipped with junction box and 1.3m cable H05RN-F.

Technical specifications

Referentie	BM2-300460GR
EAN code	5420076262334
ETIM code	EC001744

Electrical specifications

System power (W)	318
LED power (W)	295
Input voltage (Vac)	100-240
Frequency (Hz)	50/60
Driver included	yes
Driver intern/extern	intern
Dimmable	nee
Flicker free	yes
Power factor	0,95
Connection cable	1,3m H05RN-F
Driver output (V)	48
Driver output (mA)	6700
Isolation class	I
Energy class	A+
N° circ. breaker 16A C	2
N° circ. breaker 16A D	5
Inrush current	70A

Warranty and certification

Lifetime (h)	50.000 L80B20
Warranty (years)	5 (excluding batteries)
ENEC	yes

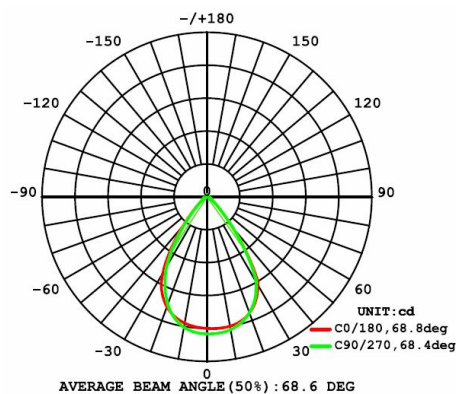
Photometric specifications

Light angle (°)	60
Color temperature (K)	4000
CRI	>80
UGR	30
SDCM	3
Lumen output (Lm)	33436
Lm/W	111
Flux code	85 96 99 98 100
Ledchip	LUMILEDS 5050
Led manufacturer	Lumileds
N° of LEDs	364
Photobiological class	RG1

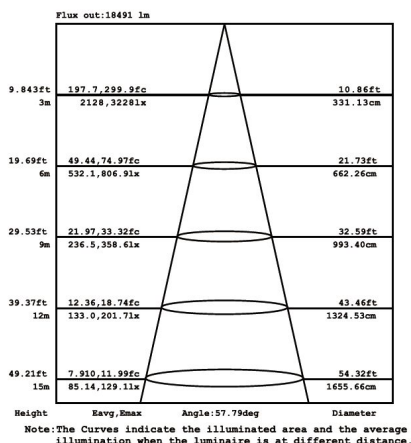
Dimensions and material properties

Dimensions (LxBxH)	328x215x463mm
Weight (kg)	8,7
Color	grey
Working temp. (°C)	-20~+50
IP value	IP65
IK value	IK10
UV resistant	yes
Seawater resistant	no
UL94	
N° in masterbox	2
N° on pallet	
MOQ	1
Stock item	no

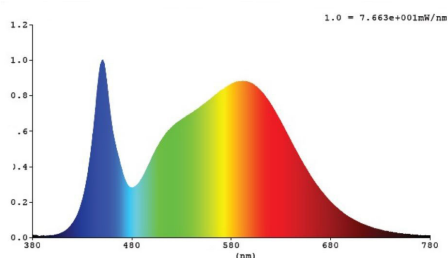
Lumen distribution



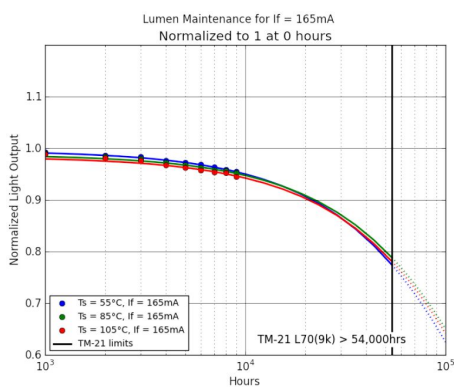
Distance curve:



Spectrum distribution



Lumendrop

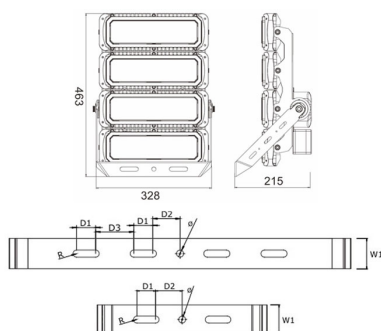


Accessories

IP68-connect	Connection kit 3p IP68 2,5mm² male-female
BM3-FP1	Valbeveiliging BM2/BM3 1x 2mm 75-300W
FL-POLE	Support for pole 60mm for floodlight Evolve
FL-POLE-CLAMP	Support for pole 60mm for floodlight Evolve



Dimensions



Unit: mm

power	H1	H2	L1	L2	D1	D2	D3	W1	R	Ø
75W	320	130	85	225	40	48	/	55	6,5	13
150W	320	215	85	275	40	48	/	55	6,5	13
230W	320	324	85	275	40	48	/	55	6,5	13
300W	320	433	85	330	40	48	/	55	6,5	13
450W	628	324	85	275	40	50	60	55	6,5	13
600W	628	433	85	275	40	50	60	55	6,5	13
900W	628	690	85	390	40	50	60	55	6,5	13
1200W	628	910	85	390	40	50	60	55	6,5	13

Connection diagram

